

# IN-PERSON

# HYBRID

# INSTRUCTION

Santa Rosa City Schools  
January 13, 2021

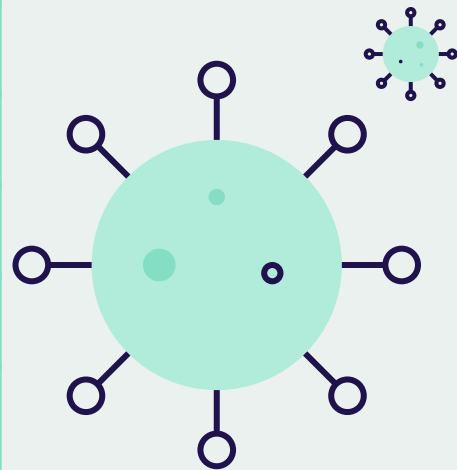


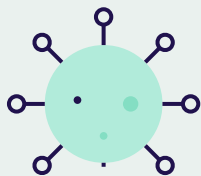
# CONTENTS OF THIS PRESENTATION

1. Sonoma County COVID-19 Cases and Vaccinations
2. Governor Newsom's Proposed Safe Schools for All Plan
3. Assembly Bill 10: Pupil instruction: in-person instruction: distance learning
4. Cal OSHA Covid-19 Protection Program
5. SRCS Crosswalk with the Safe Schools for All Plan and AB 10
6. SRCS Readiness for In-Person Instruction
7. Priorities for Readiness

# SONOMA COUNTY COVID-19 DATA

As of Jan 13, 2021	Sonoma Status
Tier Assignment	Purple
Cases per 100,000	47.5 countywide
Deaths	219
Testing	Ends contract w/ Curative
Vaccinations	2.7% vaccinated 1B group expected to start in February





# GOVERNOR'S SAFE SCHOOLS FOR ALL PLAN PROPOSAL

California's Safe Schools for All Plan is built around four pillars. These pillars are:

- **Funding** - the Budget will propose \$2 Billion for the safe reopening of schools, beginning in February with Kinder Academy through 2nd grade and students who are disproportionately impacted, and return other levels to in-person instruction through the spring
- **Safety & Mitigation** - the state will focus on testing, PPE, contact tracing and vaccinations
- **Oversight & Assistance** - hands-on support from the state to help schools develop and implement COVID-19 safety plans
- **Transparency & Accountability** - A state dashboard and hotline

# THE GOVERNOR'S PROPOSED SAFE SCHOOLS FOR ALL

## Funding

- \$450 per ADA and up to \$700 per LCFF based on district ADA (SRCS = \$6.XM)
- Comes from Prop 98 base funding (not new dollars)
- Apply by Feb 1 or March 1
- Grades KA - 2 and KA-12 Special Education, English Learners, homeless, and foster youth, then Grades 3-6
- Negotiated the impact of a safe environment with SRTA and CSEA
- Submit a COVID-19 School Site Safety Plan to county public health (state template coming soon)
- Eliminates the waiver process

## Safety & Mitigation

- Applies to counties with 7 day average of 28 or fewer cases per 100K (Sonoma County is at 33.5 per 100K)
- Vaccination are expected for educators in February. 28 days between vaccines.
- Surveillance testing was to be conducted by Curative. We will work with the County on a new vendor.
- Contact tracing conducted by the district. On site designated staff will contact trace.
- PPE including face masks, face shields, gowns (where needed), gloves, disinfectant wipes, and hand sanitizer
- Dashboards by the state, county, and SRCS

# THE GOVERNOR'S PROPOSED SAFE SCHOOLS FOR ALL

## Oversight & Assistance

- COVID-19 safety plan assistance. The state will provide the template for the plan. Cal/OSHA also has a required COVID-19 Protection Plan (CPP).
- County has 5 days to approve the COVID-19 safety plan
- CPP will be presented to the Board on January 27, 2021

## Transparency & Accountability

- State dashboard and hotline
- County dashboard and hotline
- SRCS dashboard
- Email address for questions: [questions@srcs.k12.ca.us](mailto:questions@srcs.k12.ca.us)
- FAQ will be created from these questions

## ASSEMBLY BILL 10

- Common state public health standard for safe campuses
- Technical assistance to meet and enforce these standards
- State funding to meet and enforce standards
- Districts report data on pupil and employee COVID-19 infection rates and school opening status
- This data is available for public transparency
- State prioritize the safe in-person return of small cohorts for students struggling with distance learning
- Fully funded on-campus childcare
- Student re-engagement plan
- Learning loss mitigation programs
- Plan adopted that offers in-person instruction within two weeks of public health orders allowing schools to open.



# CAL OSHA COVID 19 PROTECTION PROGRAM

All employers and places of employment are required to establish and implement an effective written COVID-19 Prevention Program (CPP) pursuant to an Emergency Temporary Standard in place for COVID-19 (California Code of Regulations (CCR), Title 8, section [3205\(c\)](#))

<b>Authority &amp; Responsibility</b>	<b>Identification &amp; Evaluation of COVID-19 Hazards</b> (Employee participation and screening)
<b>Correction of COVID-19 Hazards</b>	<b>Control of COVID-19 Hazards</b> (Physical distancing, face coverings, engineering controls, cleaning & disinfecting, Shared equipment & PPE, Hand sanitizing, PPE)
<b>Investigating &amp; Responding to COVID-19 Cases</b>	<b>System for Communicating</b>
<b>Training &amp; Instruction</b>	<b>Exclusion of COVID-19 Cases</b>
<b>Reporting, Recordkeeping, &amp; Access</b>	<b>Return to Work Criteria</b>



# SRCS CROSSWALK OF RTS PLAN - SSFA - AB 10 - MOU'S



Crosswalk of RTS Plan - Safe Schools for All - AB 10 - MOU's

# SRCS HYBRID IN-PERSON INSTRUCTION

SRCS will be **READY** to open for in-person instruction by March 1, 2021

In-person instruction will begin when the state and county cases/threshold has been met in Sonoma County

## After March 1st and Case/Tier Threshold has been met

- First Wave: Preschool through 3rd grade
  - Pre -12 Special Education, English Learners, Foster Youth, and Homeless

## Two weeks after the First Wave starts

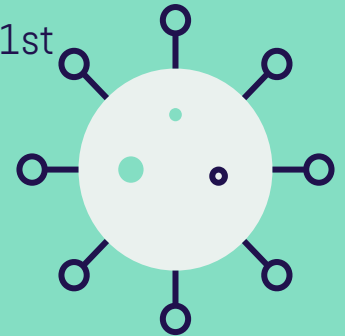
- Second Wave: 4-6th grades

## Governor's Plan and AB 10 are silent on the start of secondary in-person instruction

- Third Wave: 7-12th grades

## SRCS HYBRID IN-PERSON INSTRUCTION

- ❖ AA/BB Cohort Learning Model (current and negotiated model in RTS Plan 2.0)
- ❖ In-person cohorts are being developed
- ❖ Negotiations will begin with SRTA and CSEA on current MOU's
- ❖ Staffing to accommodate in-person and distance learning cohorts
- ❖ In-person class sizes (KA-3rd = 12 per cohort) (4-6th = 16 per cohort) (7-12th = 16 per class)
- ❖ In-person class sizes reduced 35% due to students continuing in distance learning (to 8 and 11)
- ❖ Training has begun and will continue for health and safety protocols
- ❖ Cal OSHA COVID-19 Protection Plan will be presented on Jan 27th board meeting
- ❖ COVID-19 Safety Plan will be completed as soon as we receive the template
- ❖ SRCS will apply for the Governor's Safe Schools for All funding by Feb 1st or March 1st
- ❖ SRCS Dashboard will be live on the SRSC website Jan 14th
- ❖ Extended summer learning
- ❖ Return to School Plan 3.0 at the Jan 27th board meeting



# SRCS HYBRID IN-PERSON INSTRUCTION

## AA/BB Cohort Learning Model In-person cohorts

	Total In Person	Total Remote	Total Number of Student in KA-3
Abraham Lincoln	96	44	140
Albert Biella	105	33	138
Brook Hill	96	71	167
Helen Lehman	150	119	269
Hidden Valley	173	88	261
James Monroe	120	83	203
Luther Burbank	107	58	165
Proctor Terrace	165	30	195
Steele Lane	140	47	187
SR Arts Charter	111	41	152
SR French American	205	47	252
CCLA	217	59	276
<b>TOTAL</b>	<b>1685</b>	<b>720</b>	<b>2405</b>



# PRIORITIES FOR MARCH 1 READINESS



Parent Reps Meeting Jan 21



COVID-19 Surveillance Testing



SRTA & CSEA MOU Revisit



SRCS Dashboard



COVID-19 Vaccinations

